



# Foundation for a Healthier Senegal



**IMPACT  
BRIEF**

**2023**

# Dear Friends,

For many in Senegal's most rural communities, illness comes often but access to care does not. Today—with you—we are changing that. The foundation is celebrating an incredible milestone: we've reached more than 90% healthcare coverage in the Senegalese village of Nganda. The 13 communities of Nganda make up 1,500 square miles of dense desert and washed out dirt roads; people previously traveled up to two hours to reach the nearest clinic. In the last 12 months, we have deployed frontline community health workers to ensure 12 of the 13 communities have access to essential healthcare services.

This milestone marks the first time in Senegal's history that nearly all villagers in a district as remote as Nganda have access to a professional community healthcare worker. Why does this matter? Imagine not living in a city like Washington DC, Atlanta, Paris, or Dakar where a clinic might be around the corner or a short drive away, instead living in an isolated village in Senegal and your two-year-old toddler wakes one morning with a fever. You panic, because you know he likely has malaria and the only way to get your son the medicine he needs would be to carry him on your back and make the hike for miles before reaching the nearest clinic. It is an impossible situation. Yet, this is the reality of Senegalese people who lack physical access to medical care because they live in remote villages too far to walk to the nearest clinic.

We launched FOHSEN with the support of my patients, family, and friends to save lives in Senegal's most remote villages. We do this by employing community health workers and giving them all the training, equipment, support and incentives they need to perform as professional health practitioners.

This is part of an innovative rural healthcare system that achieves access for all and saves lives by bringing care directly to women and their children.

Today, the communities of Nganda have unprecedented access to the care they need with mothers receiving critical support during their pregnancy. Now, parents no longer feel the panic of not knowing whether they will be able to sustain their feverish toddler for the hours it will take to reach the distant clinic. The parents and children have quality care at their doorstep—where it has the biggest impact.

Our challenge now is to scale-up and reach the most vulnerable populations throughout Senegal. There are still millions of people in remote areas of Senegal who go without access to care. We have a plan to start changing that. Between 2024 - 2028, in partnership with the Senegalese Ministry of Health, we will deploy additional community health workers to bring access to care for nearly 300,000 citizens in the entire Kaffrine region. Simultaneously, this will serve as a model for health-system strengthening throughout Senegal.

We could not have come this far without your support. This is an extraordinarily exciting moment in our collective journey. We hope you will feel inspired by the stories and impact described in this report. As always, we invite you to join us to make this work stronger.



Dr. Saloum Cisse, MD,  
MPH, Co-Founder



Oumar Diagne,  
Country Director



# The Opportunity

## Urban

## Rural

94%

% of women  
who deliver in  
a health  
facility

65%

82%

% of births  
attended by a  
skilled  
professional

45%

67%

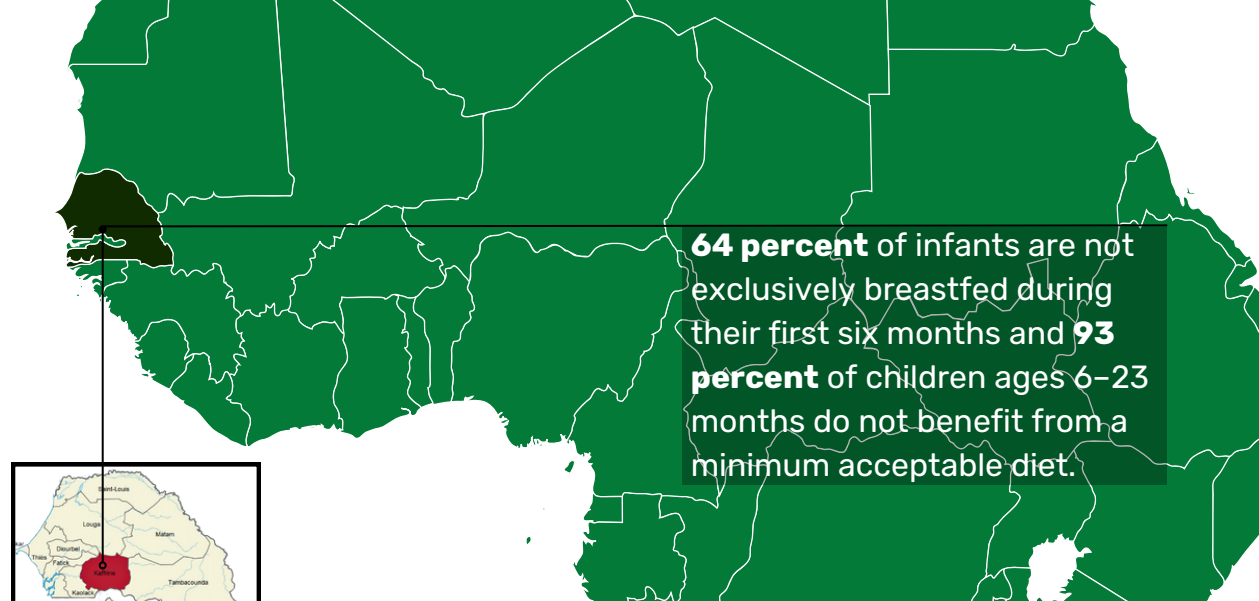
% of women  
who receive  
antenatal care  
coverage at  
least 4 times

45%

88%

% of mothers  
who receive  
postnatal care  
within  
2 days

69%



**64 percent** of infants are not exclusively breastfed during their first six months and **93 percent** of children ages 6–23 months do not benefit from a minimum acceptable diet.

## Kaffrine

FOHSEN is currently operating in the village of Nganda in the Kaffrine region of Senegal, serving approximately 20,000 citizens.

On measures of maternal and child health, Kaffrine ranks particularly low amongst Senegal's rural regions.

Children lack access to essential health care, nutrition, and stimulation during their first 1,000 days of life, a critical period in their development.

In this highly impacted area, there is a gap in need and funding.

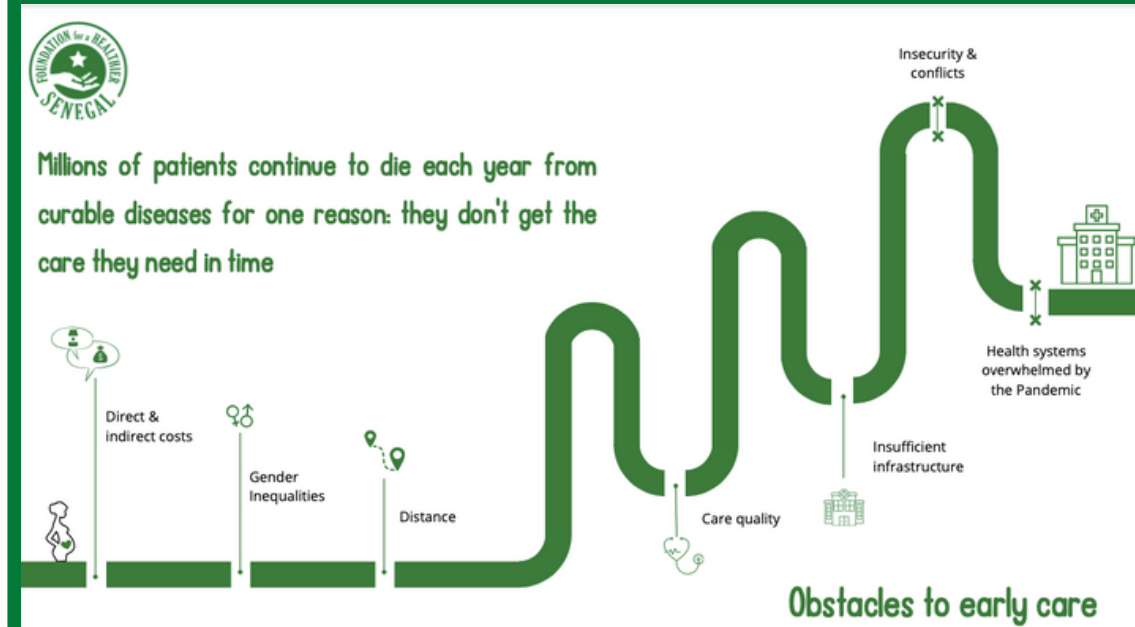




# The Solution

FOHSEN works to increase access to crucial healthcare services through community-led initiatives that will expand access to formal, public sector, and early health centers by renovating existing facilities. We deliver effective community-based primary healthcare for mothers and children under 5 in partnership with regional and national health authorities.

## The Model



## The Approach

Community Health Workers who are digitally-empowered, trained, equipped, supervised, and salaried expand the reach of the healthcare system to patients' front doors.

## System Strengthening

Developing and strengthening healthcare skills, abilities, processes and resources for the government. We are focusing on improving access to crucial health infrastructure by constructing and renovating health facilities.

## Government Partnership

We are partnering with the Senegalese Ministry of Health and community health authorities to design and implement innovative solutions to address persistent health and equity gaps.



# Our Programs

At FOHSEN, we strive to bridge the rural health equity gap with three pivotal programs

**Digitally  
Empowered  
Health Workers**

**Clinic  
Rehabilitation  
and  
Construction**

**Proactive  
Preventative  
Care**

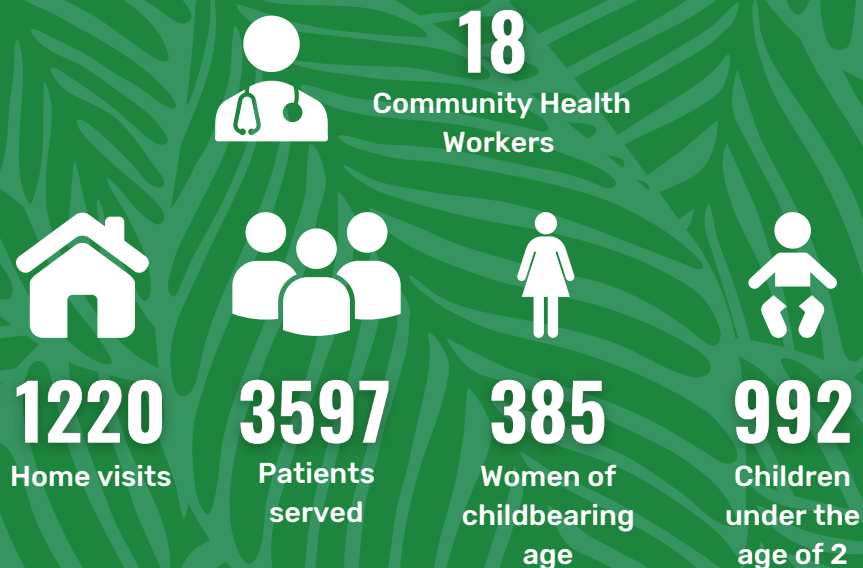


# Proactive Care Model

The cornerstone of our efforts, the CHW Program, involves training trusted community members to respond effectively to crises and deliver life-saving care. They provide pre-natal and antenatal checkups, diagnose reproductive infections, conduct health education classes on reproductive and sexual health and family planning, and monitor child development by providing regular check-ups.

These dedicated individuals play a crucial role in creating equitable healthcare access by accelerating disease detection and treatment.

## Expanding our reach in 2023



## We recruited



3

Community Health Workers

With a total of 18 CHWs, we serve



12

Out of 13 communities

\*Each of the 13 communities of Nganda has an average population of 1,400, with a total population of approximately 20,000 citizens.





Real time health monitoring and analysis

1

Health surveillance and management

2

AI scheduling assistance

3

Integrated with regional and national health databases

4

Improved continuity of care

5



## The “KërSanté” Application

FOHSEN is developing a digital tool that will accelerate universal healthcare coverage and improve community-level health outcomes through facilitating widespread, early disease detection, fast responses to medical emergencies, and identification of cost-effective, high-impact health interventions. CHWs will use the application during home visits to assess their patients and record their data which will improve the accuracy and speed of their diagnoses and assist CHWs in systematically following up on their patients' treatment.



“

As humans, all we have is our healthcare, so now that we have someone that is helping our families have access to that, all we can do is continue to pray for them. But if I can ask anything, it's to increase the number of family members that are covered”

Astou Ndiaye,  
Citizen of Nganda, Health Insurance Beneficiary

We enrolled



300

Individuals



in our health insurance plan

Expansion of basic universal health coverage through mutual health insurance offices

Reform of Health Coverage Institutions by implementing a national decree

**Senegal's UHC Program**

Strengthening of existing no-cost initiatives

Implementation of new no-cost care initiative for children under 5-years-old

## Eliminating User Fees

Under the current government healthcare plan, citizens pay 7000 FCFA per year for health insurance. Families in need pay half of that cost. However, due to extreme poverty, many rural families cannot afford the reduced rate. To expand healthcare access, FOHSEN has initiated a partnership with the Nganda Mutual Office to cover the subsidized rate for 20,000 individuals by 2026.



# The Nganda Maternity Clinic

Those who live in rural areas of Senegal often live far from modern healthcare facilities and have limited access to health services. Our organization is dedicated to addressing these pressing issues, so we are constructing a maternity health clinic in the village of Nganda.

This clinic will provide pre and postnatal care and general medical services such as vaccinations, emergency rehydration, and regular physicals. These are services that would otherwise require travel up to 34 Kilometers (21 miles) to access.

Serving approximately 20,000 people in the surrounding communities of Nganda, the clinic will strengthen rural healthcare systems and create a smoother referral process for these communities.

20,000

Population served

34km

From nearest hospital

## PRIORITIES

- 1 Support national healthcare agendas and practices
- 2 Sustainable partnerships with local, regional, government, and private actors
- 3 Human resource development in the health sector
- 4 Community health facility upgrading and renewable energy
- 5 Health promotion in rural communities

## PROGRESS

- ✓ Strategic Planning
- ✓ Soil & Site Survey
- ✓ Construction Quality & Safety
- ✓ Permitting
- ✓ Risk Management Plan







## Establish Collaboration

We are centering the voice of government by working with the Senegalese Ministry of Health's Kaffrine District Assistant Health Medical Doctor, who has jurisdiction over the health centers and communities where we work. This person is implicated in every stage of the the CHW program development and maternal health clinic construction, from the initial design to the implementation. The district team has helped identify challenges, provided input on the solutions, and selected the first CHW training topics.

Step 1

Step 2

## Work with Existing Infrastructure

We work with the Assistant Health Medical Doctor to ensure our programs are embedded in government systems, leveraging existing government infrastructure and personnel. The CHW program is being implemented directly in government clinics under the District Health Medical Doctor's supervision. The district is able to observe the program as it operates and receive feedback directly from the staff.

Step 3

## Develop Program

FOHSEN has partnered with Muso Health, a Malian NGO with over 20 years of experience operating a community health program in Mali, Ivory Coast, and Morocco. FOHSEN is leveraging Muso's expertise and resources to establish a robust community health program that will improve the health outcomes of patients by ensuring rapid access to quality care.

Step 4

## Promote Government Ownership

Our final objective is to progressively transfer real ownership of the program to the government. To do so, we are working to embed management staff on the Regional Health Team rather than employing them directly. We are also transferring responsibilities like planning and training to government representatives, with our team playing a supporting role. These small steps have begun to shift both the perceived and actual ownership of the intervention from FOHSEN to the government's system, positioning the program to be sustainable in the long-term.

Partnering with the  
MoH



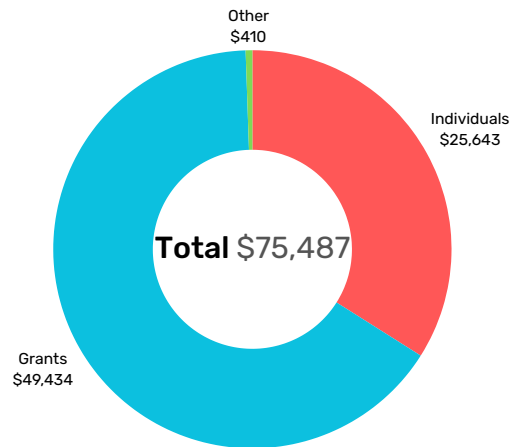
# Financials

## Total Revenue

**\$49,434**  
GRANTS

**\$25,643**  
INDIVIDUALS

**\$410**  
OTHER

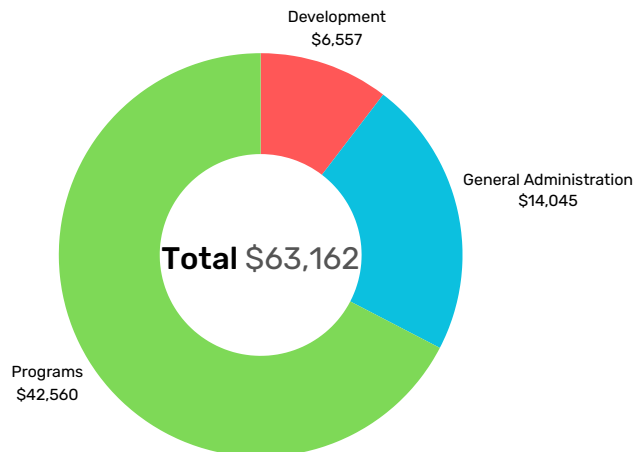


## Total Expenses

**\$14,045**  
GENERAL ADMINISTRATION

**\$6,557**  
DEVELOPMENT

**\$42,560**  
PROGRAMS



# Partners

Muso Health

Segal Family Foundation

Senegal Ministry of Health

Lionceau

Community Health Impact Coalition

# Get In Touch

## Social Media

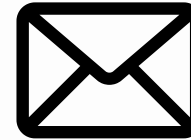


Fohsen\_



Foundation  
for Healthier  
Senegal

## Contact Information



[Administrator@fohsen.org](mailto:Administrator@fohsen.org)



77 768 00 68

[www.fohsen.org](http://www.fohsen.org)