



Foundation for a Healthier Senegal



IMPACT BRIEF

2021

To Our Supporters,

As we prepare to close our second full year, I am writing to say **thank you**.

FOHSEN is committed to advancing patient-centered care for some of the most under-resourced communities in Senegal. Our vision is healthier rural communities, where individuals from all walks of life have access to quality medical care and frontline healthcare workers have the resources, training and the salary they need to serve their community.

On our way to building a state-of-the-art maternity clinic equipped with a laboratory and outpatient services, we are making a tremendous impact, even amid the ongoing pandemic.

All of this is made possible thanks to you, our generous supporters, and the FOHSEN staff, led by a group of young, talented, and passionate professionals. With an eye towards community participatory action, we have been able to provide training to local community members to serve their neighbors and the larger community. We also collaborate with medical volunteers, who have received training from around the world to mentor and support our midwives and nurses.

As we prepare for our third year, I would love your continued engagement in investing in rural communities to strengthen the health system, increase access to high quality health services and products, and promote the involvement of individuals and communities in the management of their own health and health services.

My Warmest Regards,

Saloum Cisse, MD, MPH

Co-Founder, FOHSEN

MEASURING PROGRESS

Improving maternal and child health outcomes throughout rural communities

During 2021, the Foundation reached new goal posts that have nearly doubled our impact from the previous year. With more funds raised, more patients seen, and more people trained to administer emergency medical care, our foundation is moving rural Senegalese communities towards a healthier and more equitable future.



166%

Increase in Supporters

Our Support System

Since 2020, support from donors has more than doubled. Thanks to our supporters, Donations have increased by over 200% between 2020 and 2021. This gives us more capacity to serve Senegalese communities and improve health outcomes.



\$4,000

Worth of Donated Medications

Supporting Local Pharmacies

Our foundation was able to donate over \$4,000 worth of medications to local pharmacies that service the villages we aid.



100

Home Visits

Increasing Access

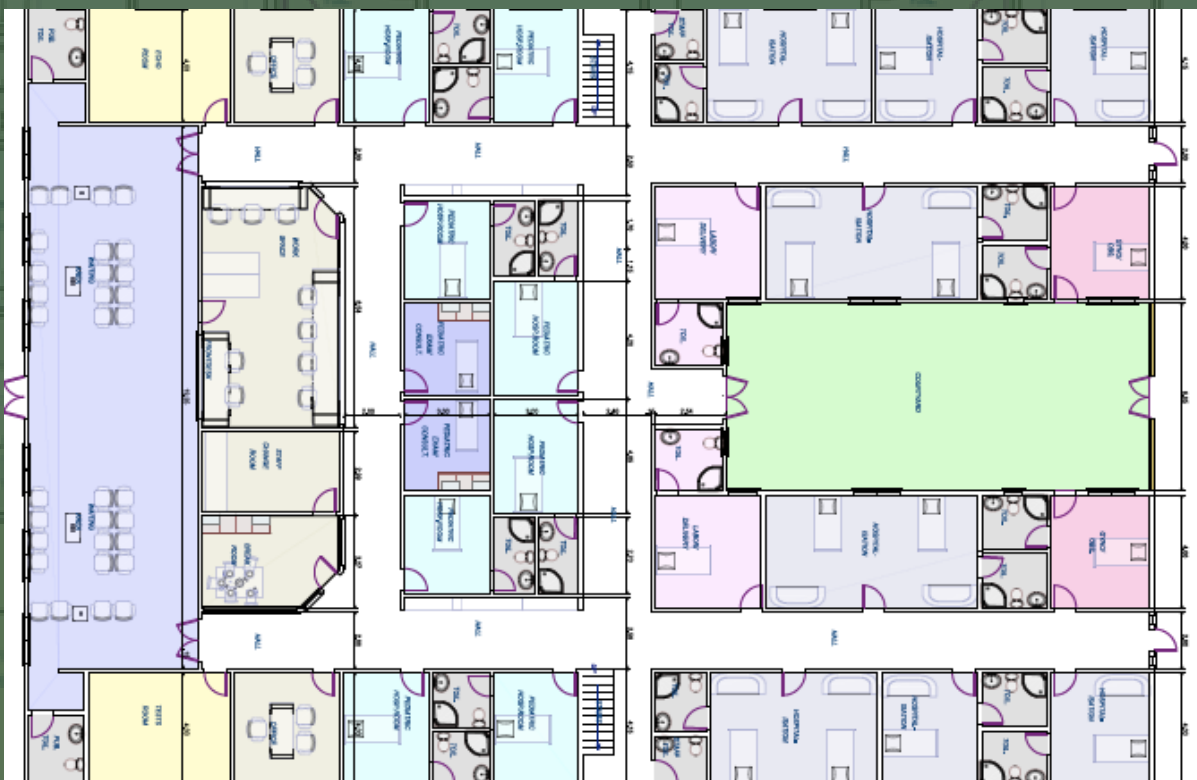
Working around the barriers posed by the ongoing pandemic, we made healthcare even more accessible to those in need by developing a community health care team. Our team visited over 100 homes in the villages we serve.

NGANGA MATERNITY CLINIC

Building with rural communities

Consulting with architectural designer Habib B., FOHSEN has landed on a final blueprint for a Nganda Maternity Clinic. The building will include OB-GYN exam rooms, nurse stations, delivery rooms, hospitalization rooms and waiting areas for patients, and lab facilities.

Thanks to the supporters of our Brick-by-Brick Campaign, we were able to raise over \$10,000 to begin the construction of the clinic. FOHSEN's clinic will service over 20,000 residents from four separate villages.





OUR COMMUNITY HEALTH WORKERS

The restrictions of the ongoing pandemic posed one of the biggest barriers to healthcare access in 2021. Following through on our commitment to making care accessible, we invested in our community health workers through training and compensation. Our team, of four, provide hypertension, glucose and referral services for mothers and children in 4 villages. Utilizing a five-step model (recruit – train – equip – manage – pay), our health workers conducted over 100 home. Aligned with our mission to economically-empower the communities we serve, each health worker is paid a monthly stipend and is given continual training by our team on the ground including Dr. Cisse head nurse, Madame Sall and Mathe Mbaye.

THE AMBASSADORS PROGRAM



ADVOCACY AROUND THE WORLD

We recruited 10 ambassadors who live and work around the world to advocate and promote our strategy for improving the lives of women and children, and ultimately raise the living standard for rural communities around Senegal.

FORMING PARTNERSHIPS

The work of FOSHEN would not be possible without the support of our partners. This past year, FOHSEN formed new collaborations with various institutions and philanthropic foundations that helped us get one step closer to achieving a healthier Senegal.

Amid the uncertainties of an ongoing global pandemic, partners like you chose to show up and demonstrate courage when it was needed the most. As a grassroots organization, we are strengthened by the generosity of individuals who believe in health equity and access. Thank you for your continued support and contribution to our commitment to providing rural communities across Senegal have access to quality health services.

SPECIAL THANKS TO OUR NEW PARTNERS



University of California,
Berkeley, MRI



Ranowo



The W.E.B. Du Bois
Graduate Society,
Harvard University



Mississippi State
Medical Association



African Student
Association, University
of Delaware

The Drake
Charitable
Fund

FINANCIAL BREAKDOWN

With new challenges brought by the pandemic, FOHSEN is more committed than ever to allocate resources to those who need it most.

To do this, our foundation strategically grew our financial capacity and secured the funding needed to start the construction of our maternity clinic: our biggest infrastructural project to date.

Foundation for a Healthier Senegal - Statement of Activity (Jan. 2020 to Dec. 2021)

	2020	2021	TOTAL
Income			
Donations	\$8,124.24	\$20,319.44	\$28,443.68
Total Income	18,124.24	30,319.44	38,443.68
Gross Profit	18,124.24	30,319.44	48,443.68
Expenses			
Fundraising	62.88	778.97	841.85
Administrative	130.94	177.83	308.77
Program	--	1,718.39	1,718.39
Total Expenses	193.82	2,675.19	2,869.01
NET EARNINGS	\$ 17,930.42	\$ 27,644.25	\$ 45,574.67

LOOKING FORWARD

Using our wins from 2021 strategically, our foundation will continue to focus on building medical infrastructure and expanding our community outreach efforts.

1

Focus on infrastructure and expanding community outreach.

- Maternity Clinic
- Grow our community health Program



2

Continue to recruit new supporters and foster relationships.

- Grants
- Medical/Public Health Partnerships
- Increase donations by 30%



3

Conditions permitting, return to pre Covid-19 outreach efforts.

- Return of the Nganda Health Fair
- Initiation of educational sit downs



IN LOVING MEMORY



In Remembrance of Talla Natou Cissé

To one of our biggest supporters and advisors, we will continue to honor you, your love for humanity, and unparalleled devotion to your family and community.

